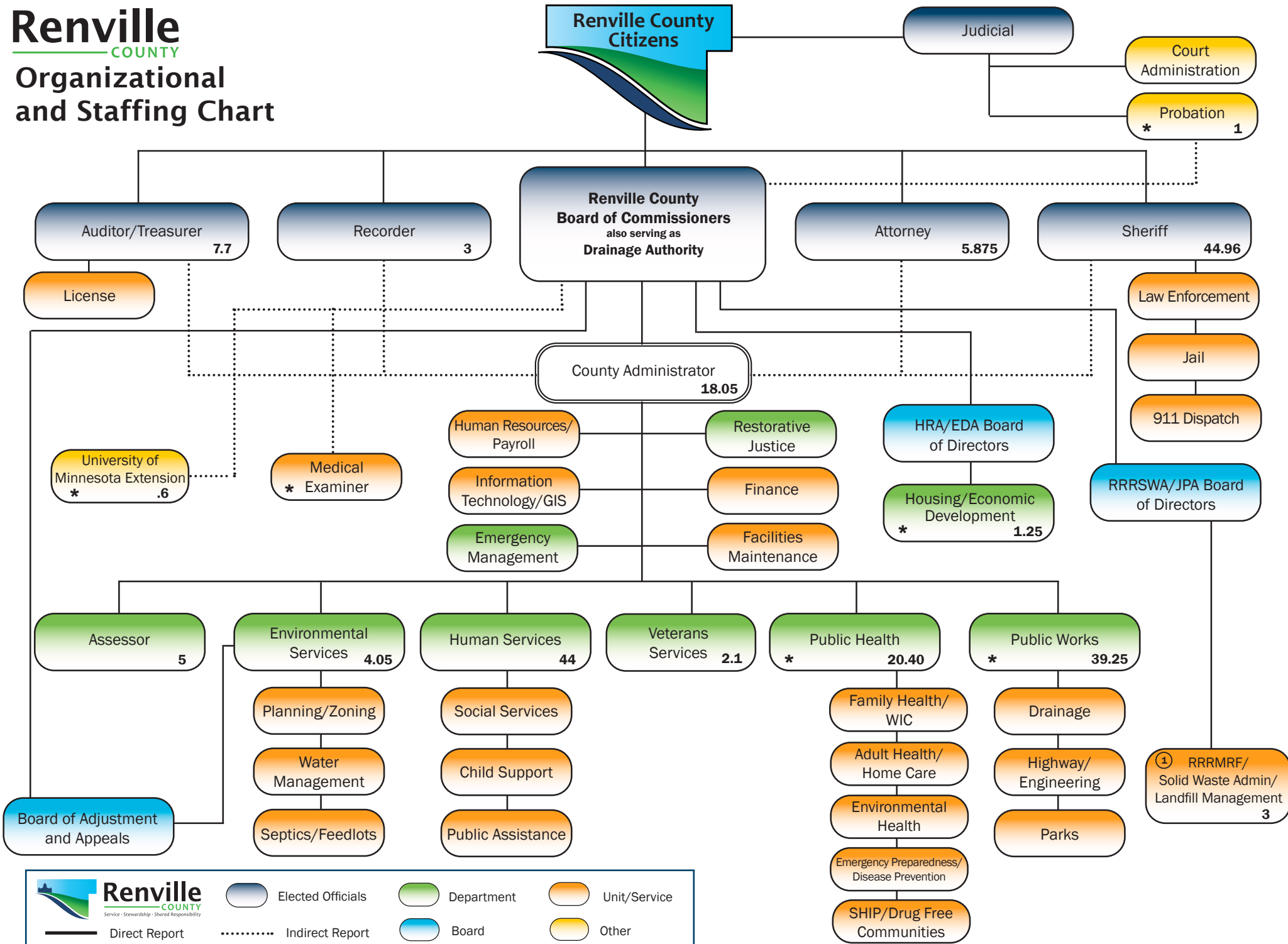


Organizational and Staffing Chart



Renville COUNTY
Service - Stewardship - Shared Responsibility

- Elected Officials
- Department
- Unit/Service
- Indirect Report
- Board
- Other

— Direct Report

Total FTE's: 200.235 Numbers represent FTE's based on budgeted hours, not including contracted staff (represented by *)

① Renville County is the Fiscal Agent for the RRRSWA Joint Powers Entity.